



Published on Wednesday, December 1, 2010, 8:15 A.M. ET

November 2010 National Employment Report

Private-sector employment increased by 93,000 from October to November on a seasonally adjusted basis, according to the latest *ADP National Employment Report*[®] released today. The estimated change of employment from September to October was revised up from the previously reported increase of 43,000 to an increase of 82,000.

This month's *ADP National Employment Report* shows an acceleration of employment and suggests the nation's employment situation is brightening somewhat. November's gain in private-sector employment is the largest in three years. This is the tenth consecutive month of gains, which have averaged 47,000 during that period. Nevertheless, employment gains of this magnitude are not sufficient to lower the unemployment rate, which likely will remain above 9% for all of 2011. Furthermore, given modest GDP growth in the second and third quarters, and the usual lag of employment behind GDP, it would not be surprising to see several more months of only moderate gains in employment even as the economic recovery gathers momentum.

According to the *ADP Report*, employment in the service-providing sector rose by 79,000 in November, the tenth consecutive monthly gain. Employment in the goods-producing sector rose by 14,000, the first monthly increase since March 2007. Construction employment dropped by 3,000 during November, the smallest decline since June 2007, and manufacturing employment increased by 16,000.

Large businesses, defined as those with 500 or more workers, increased by 2,000 while employment among medium-size businesses, defined as those with between 50 and 499 workers, increased by 37,000. Employment among small-size businesses, defined as those with fewer than 50 workers, increased by 54,000.*

In November, construction employment dropped 3,000. Construction employment has declined for over three years and the total decline in construction jobs since the peak in January 2007 is 2,304,000. Employment in the financial services sector was flat.

For information on the construction sector and use of the *ADP Report*, please visit the methodology section of the *ADP National Employment Report* website at <http://ADPEmploymentreport.com/methodology.aspx>.

*All size data included in the *ADP National Employment Report* is based on size of payroll. In some cases, small and medium-size payrolls belong to businesses employing more workers than indicated by the size grouping.

DERIVED FROM ADP PAYROLL DATA

Table 1. Employees on nonfarm private payrolls by selected industry sector and size*
(In thousands)

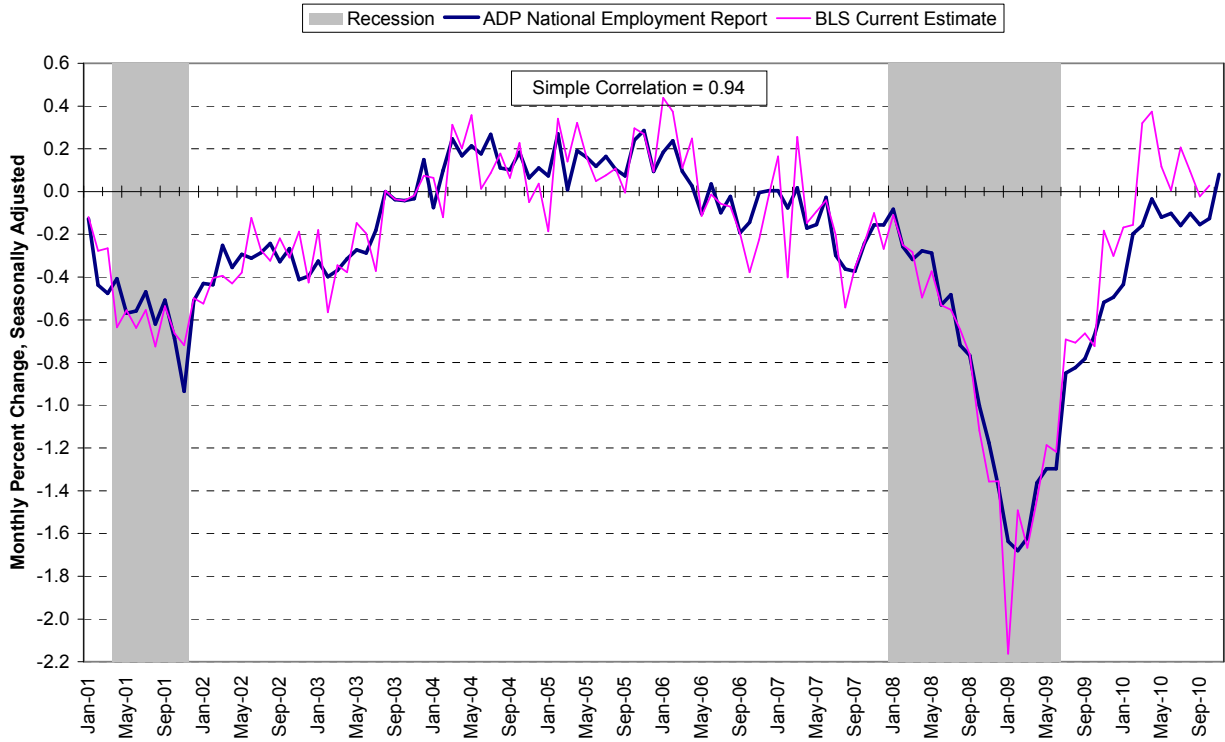
Industry / Size of Payroll	Seasonally Adjusted						Change from: Oct.2010 - Nov.2010p
	Jun. 2010	Jul. 2010	Aug. 2010	Sep. 2010	Oct. 2010p	Nov. 2010p	
Total nonfarm private	106,936	106,978	107,015	107,044	107,126	107,219	93
Small (1-49).....	48,237	48,260	48,276	48,297	48,337	48,391	54
Medium (50-499).....	41,194	41,215	41,230	41,241	41,279	41,316	37
Large (> 499).....	17,505	17,503	17,509	17,506	17,510	17,512	2
Goods-producing	17,545	17,517	17,499	17,472	17,450	17,464	14
Small (1-49).....	6,404	6,394	6,383	6,373	6,362	6,367	5
Medium (50-499).....	7,671	7,665	7,662	7,657	7,655	7,668	13
Large (> 499).....	3,470	3,458	3,454	3,442	3,433	3,429	-4
Service-providing	89,391	89,461	89,516	89,572	89,676	89,755	79
Small (1-49).....	41,833	41,866	41,893	41,924	41,975	42,024	49
Medium (50-499).....	33,523	33,550	33,568	33,584	33,624	33,648	24
Large (> 499).....	14,035	14,045	14,055	14,064	14,077	14,083	6
Addendum:							
Manufacturing.....	11,504	11,492	11,497	11,491	11,486	11,502	16

p = preliminary

* All size data included in the ADP National Employment Report is based on size of payroll. In some cases, small and medium-size payrolls belong to businesses employing more workers than indicated by the size grouping.

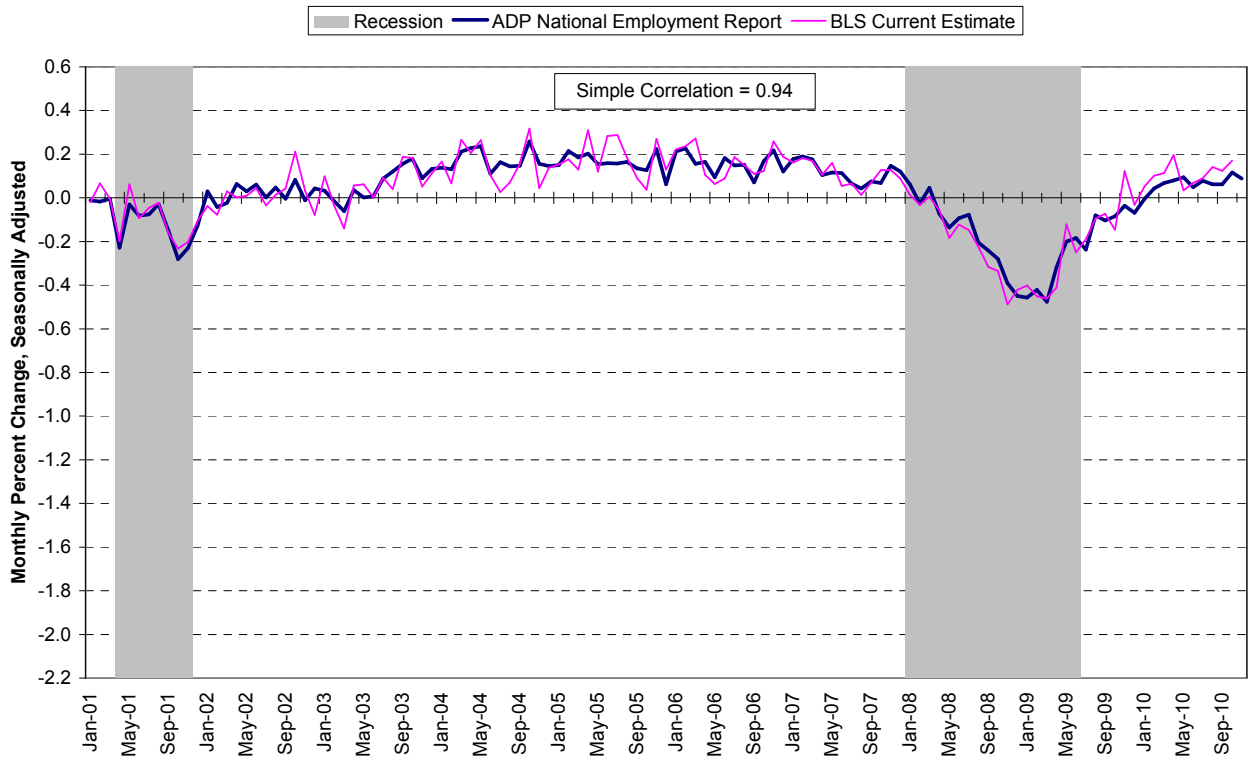
The matched sample used to develop the *ADP National Employment Report* was derived from ADP data which, during the twelve-month period through June 2010, averaged over 340,000 U.S. business clients and represented over 21 million U.S. employees. This approximately represents the size of the matched sample used this month.

Chart 2. Growth of Private Nonfarm Employment, Goods-Producing Industries



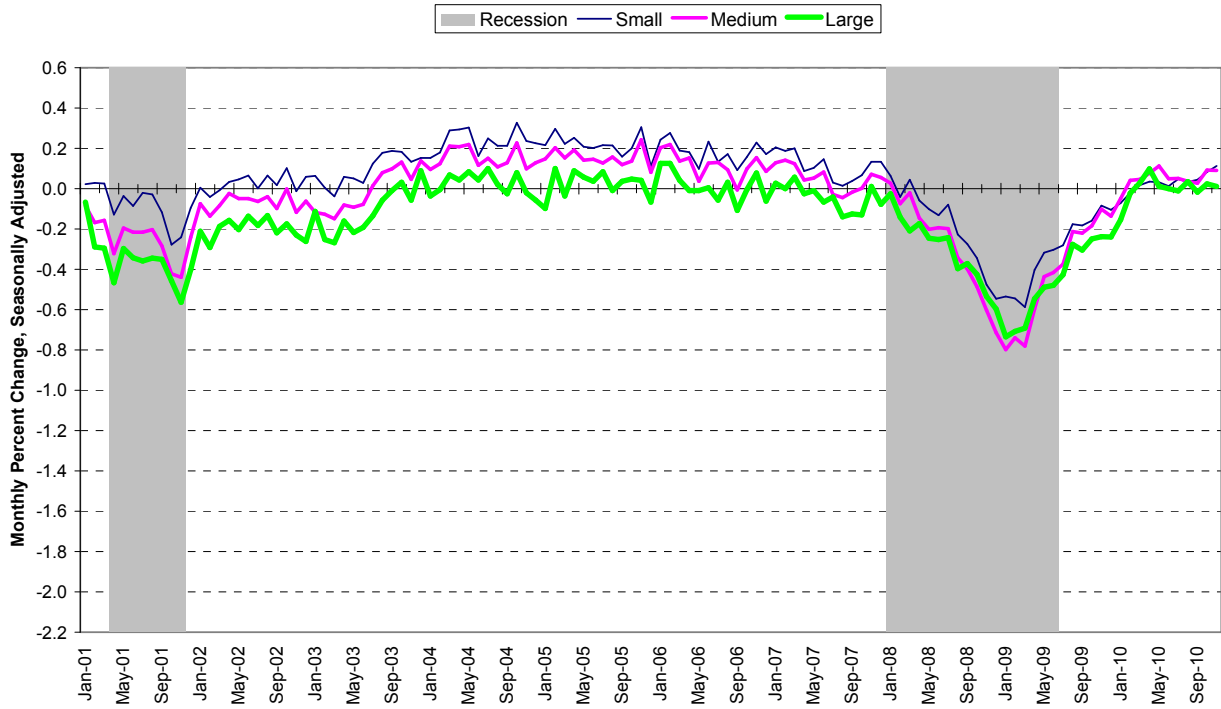
Source: Automatic Data Processing, Inc., Macroeconomic Advisers, LLC., Bureau of Labor Statistics

Chart 3. Growth of Private Nonfarm Employment, Service-Providing Industries



Source: Automatic Data Processing, Inc., Macroeconomic Advisers, LLC., Bureau of Labor Statistics

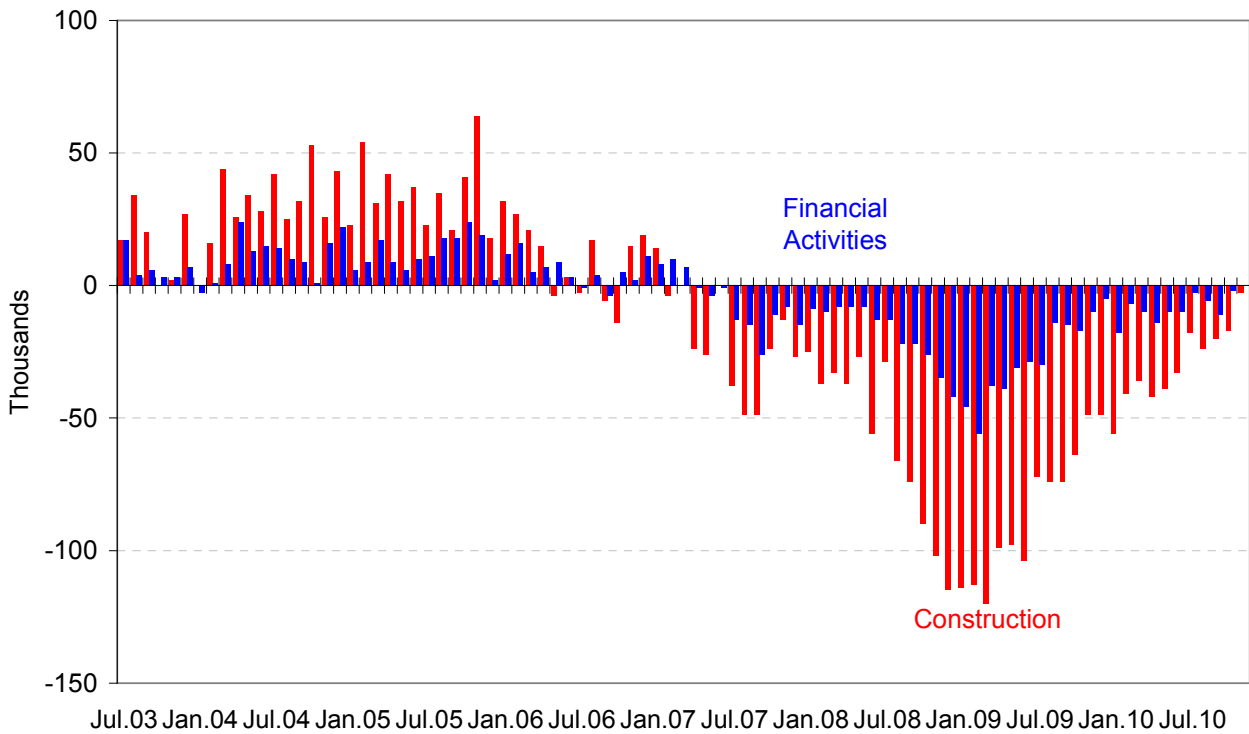
Chart 4. Growth of Private Nonfarm Employment, by Size of Payroll*



Source: Automatic Data Processing, Inc., Macroeconomic Advisers, LLC.

* All size data included in the ADP National Employment Report is based on size of payroll. In some cases, small and medium-size payrolls belong to businesses employing more workers than indicated by the size grouping.

Monthly Changes of Employment in Construction and Financial Activities



Source: Automatic Data Processing, Inc., Macroeconomic Advisers, LLC

About the *ADP National Employment Report*[®]

The *ADP National Employment Report*, sponsored by ADP[®], was developed and is maintained by Macroeconomic Advisers, LLC. It is a measure of employment derived from an anonymous subset of roughly 500,000 U.S. business clients. During the twelve month period through June 2010, this subset averaged over 340,000 U.S. business clients and over 21 million U.S. employees working in all private industrial sectors. The *ADP Small Business Report*[®] is a monthly estimate of private nonfarm employment among companies in the United States with 1-49 employees and is a subset of the *ADP National Employment Report*. The data for both reports is collected for pay periods that can be interpolated to include the week of the 12th of each month, and processed with statistical methodologies similar to those used by the U.S. Bureau of Labor Statistics to compute employment from its monthly survey of establishments. Due to this processing, this subset is modified to make it indicative of national employment levels; therefore, the resulting employment changes computed for the *ADP National Employment Report* are not representative of changes in ADP's total base of U.S. business clients.

For a description of the underlying data and the statistical properties of the series, please see “*ADP National Employment Report: Development Methodology*” at <http://ADPEmploymentreport.com/methodology.aspx>.

The December 2010 *ADP National Employment Report* will be released January 5, 2011 at 8:15 AM ET. For a full schedule of future releases, please visit: www.ADPEmploymentreport.com

Media contacts: ADP Public Relations: 973-974-7612
Macroeconomic Advisers: 314-721-4747

Technical information: 314-721-4747
www.ADPEmploymentreport.com

The ADP National Employment Report is a registered trademark of ADP, Inc.